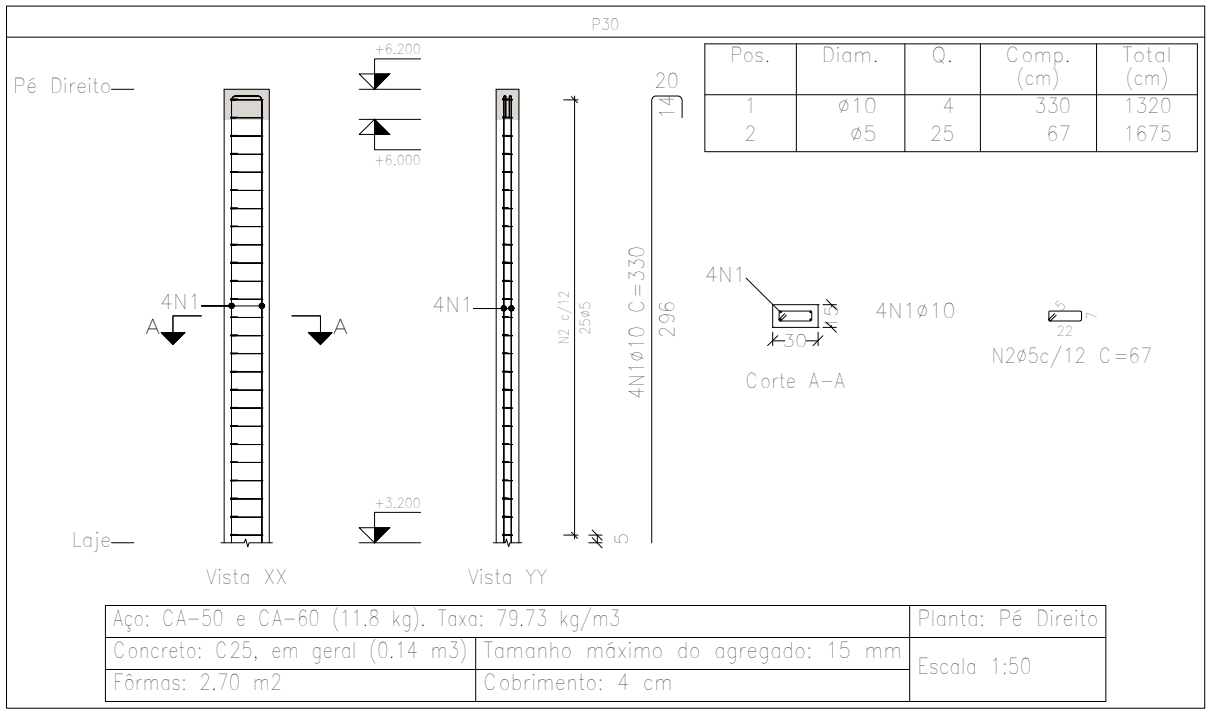
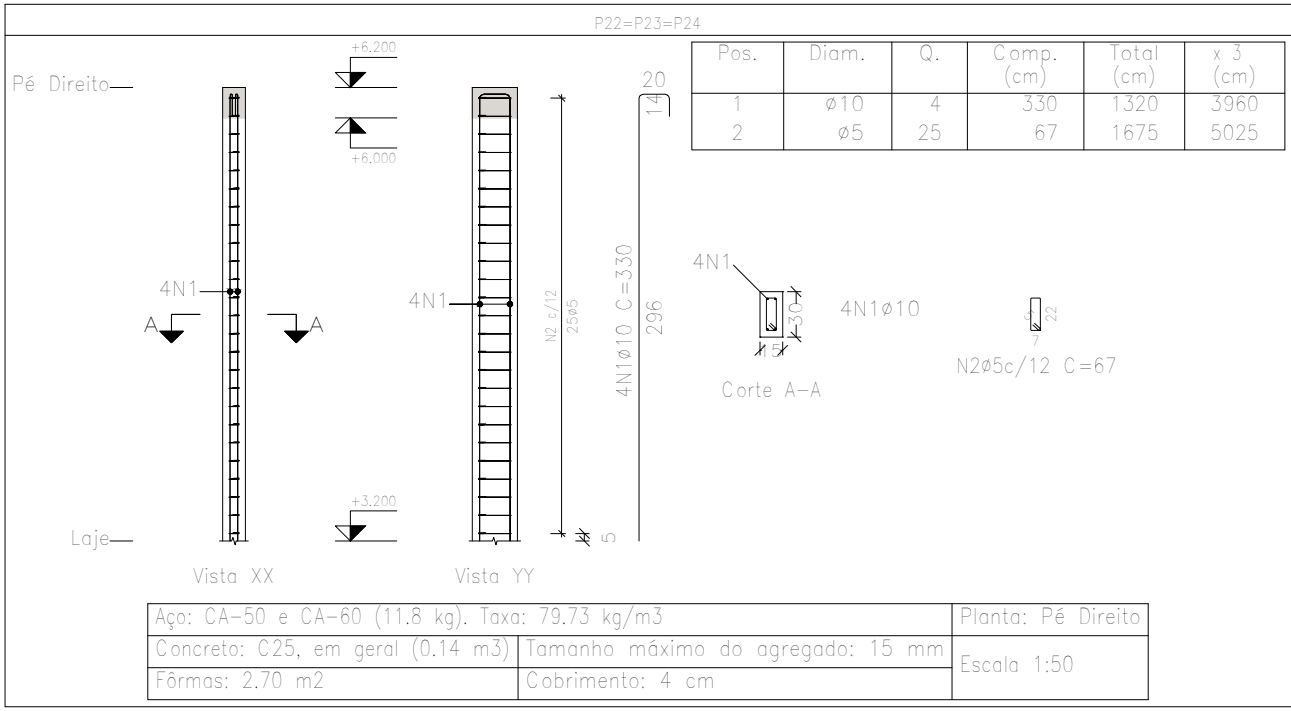
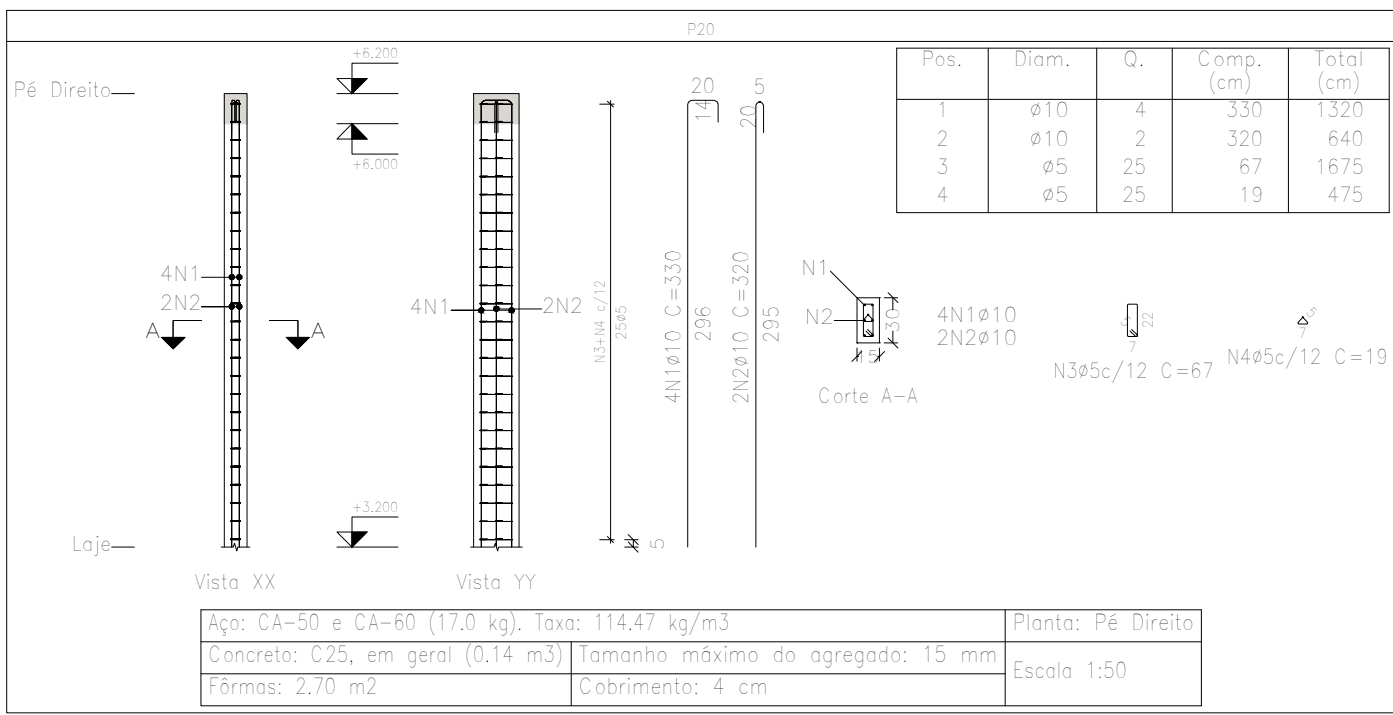
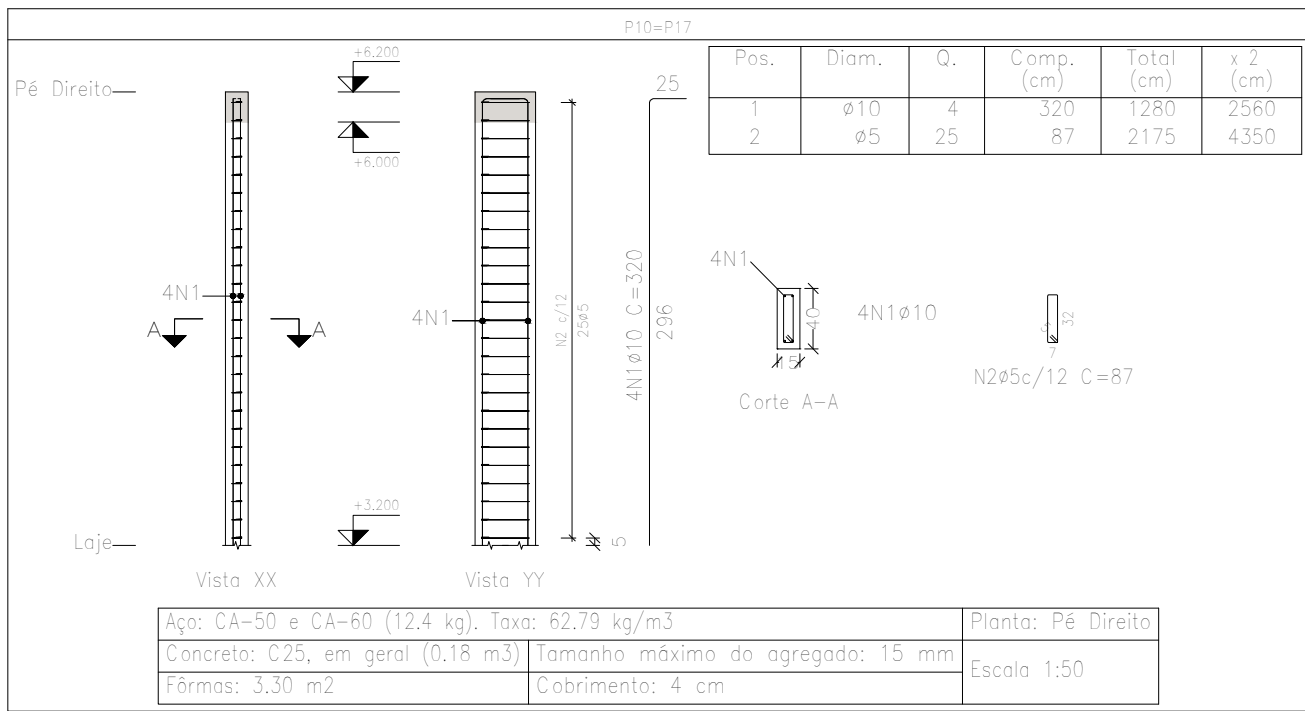
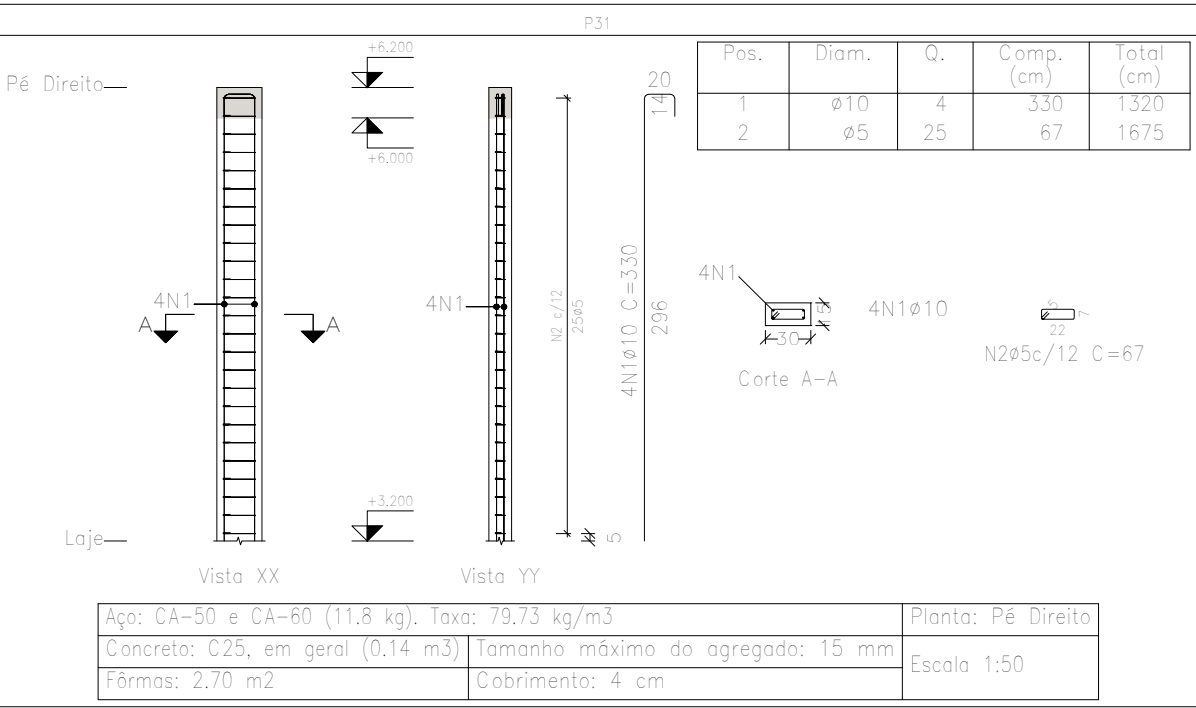
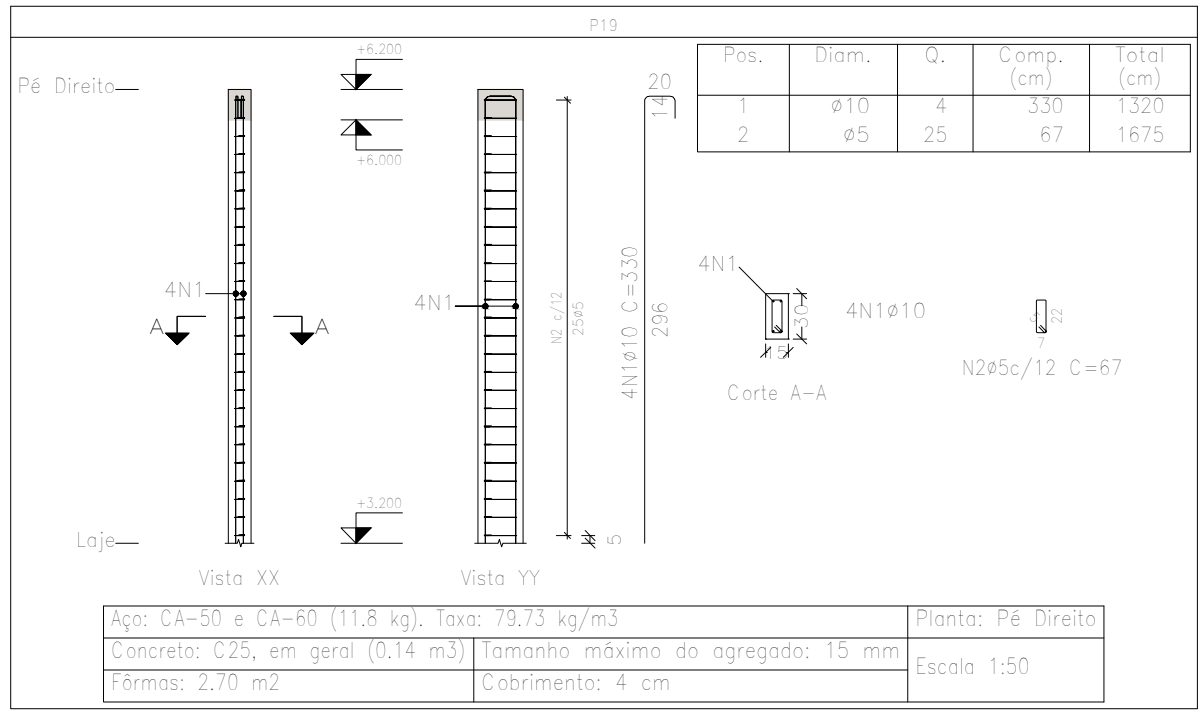
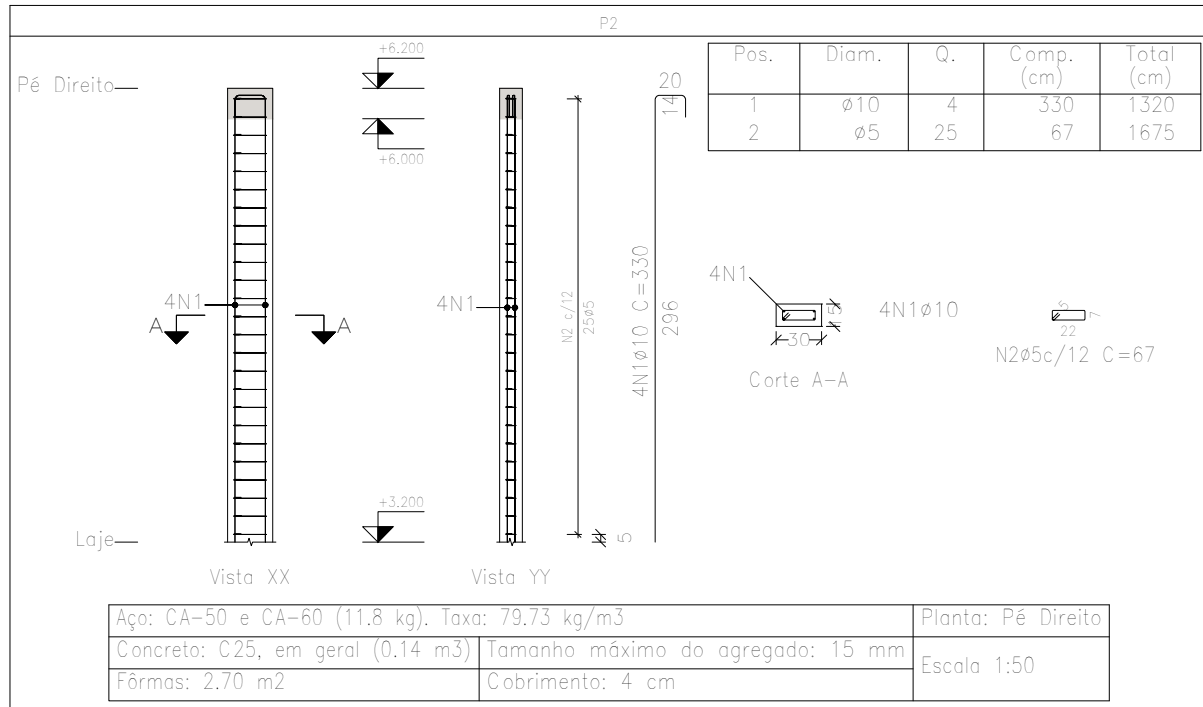
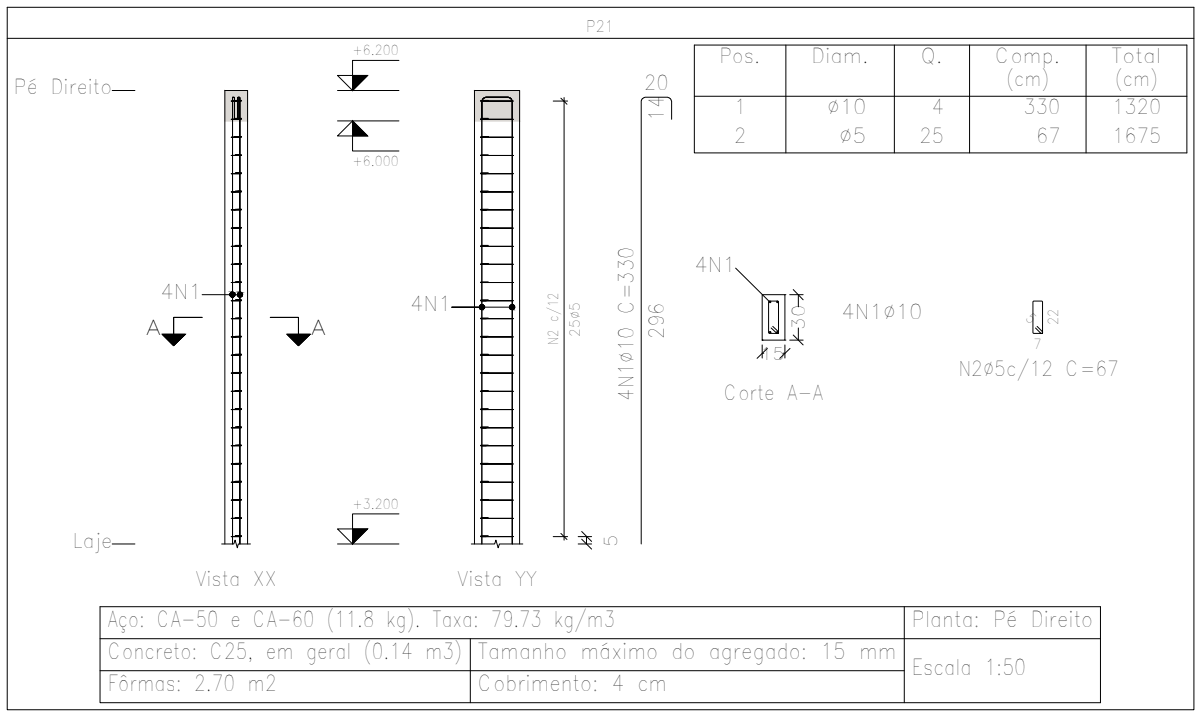
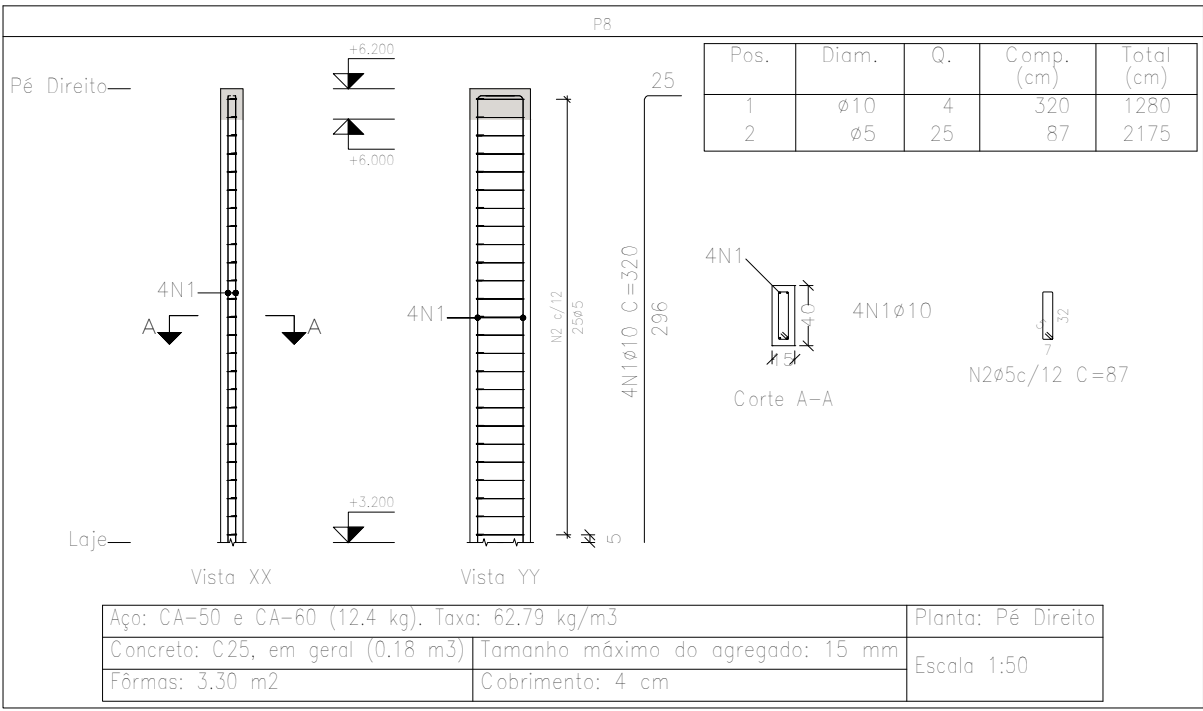


Planta: Pé Direito
Concreto: C25, em geral
Aço das barras: CA-50 e CA-60
Aço dos estribos: CA-50 e CA-60



Resumo Aço	Comp. total	Peso+10%	Total
Pilares	(m)	(kg)	
CA-50 Ø10	176,8	120	120
CA-60 Ø5	237,5	41	41
Total			161

Elemento	Pos.	Diam.	Q.	Esquema (cm)	Comp. (cm)	Total (cm)	CA-50 (kg)	CA-60 (kg)
P1	1	Ø10	4		330	1320	8,1	
	2	Ø5	25		67	1675		2,6
Total+10%:							8,9	2,9
P2	1	Ø10	4		330	1320	8,1	
	2	Ø5	25		67	1675		2,6
Total+10%:							8,9	2,9
P8	1	Ø10	4		320	1280	7,9	
	2	Ø5	25		87	2175		3,4
Total+10%:							8,7	3,7
P10=P17	1	Ø10	4		320	1280	7,9	
	2	Ø5	25		87	2175		3,4
Total+10%:							8,7	3,7
P19	1	Ø10	4		330	1320	8,1	
	2	Ø5	25		67	1675		2,6
Total+10%:							8,9	2,9
P20	1	Ø10	4		330	1320	8,1	
	2	Ø10	2		320	640	3,9	
	3	Ø5	25		67	1675		2,6
	4	Ø5	25		19	475		0,7
Total+10%:							13,2	3,6
P21	1	Ø10	4		330	1320	8,1	
	2	Ø5	25		67	1675		2,6
Total+10%:							8,9	2,9
P22=P23=P24	1	Ø10	4		330	1320	8,1	
	2	Ø5	25		67	1675		2,6
Total+10%:							8,9	2,9
P30	1	Ø10	4		330	1320	8,1	
	2	Ø5	25		67	1675		2,6
Total+10%:							8,9	2,9
P31	1	Ø10	4		330	1320	8,1	
	2	Ø5	25		67	1675		2,6
Total+10%:							8,9	2,9
							Ø5:	0,0
							Ø10:	119,4
							Total:	119,4

Garagem p Ônibus Escolares	Data:	16/08/2023
Local:	Número de desenho:	
Promotor:		
Garagem para Ônibus Escolares	Escala:	Indicado
Eduardo Rampanelli Tosetto	Data:	16/08/2023
Número do CREA:	1220503037	